

[Skip to main content](#)
[HHS.gov](https://www.hhs.gov) U.S. Department of Health & Human Services [PHE.GOV](https://www.phe.gov)
[Skip to main content](#)

HHS emPOWER Map 3.0

Over 2.5 million Medicare beneficiaries rely on electricity-dependent medical equipment, such as ventilators, to live independently in their homes. Severe weather and other emergencies, especially those with long power outages, can be life-threatening for these individuals.

The HHS emPOWER Map is updated monthly and displays the total number of at-risk electricity-dependent Medicare beneficiaries in a geographic area, down to the ZIP Code.

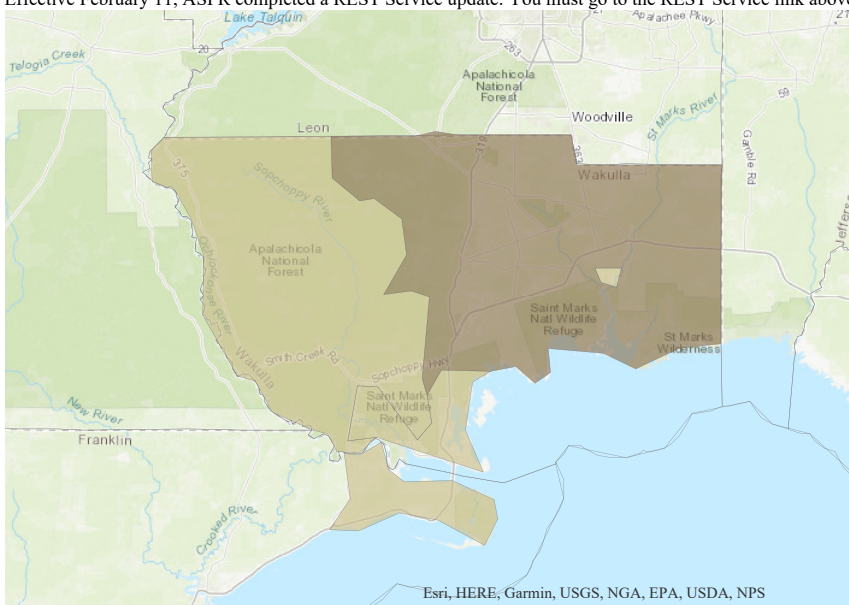
The HHS emPOWER Map gives every public health official, emergency manager, hospital, first responder, electric company, and community member the power to discover the electricity-dependent Medicare population in their state, territory, county, and ZIP Code. When combined with real-time severe weather and hazard maps, communities can easily anticipate and plan for the needs of this population during an emergency.

For more information on when and how to use the HHS emPOWER Map please see the resources section.

Resources

- [HHS emPOWER Program Fact Sheet](#)
- [HHS emPOWER Program Executive Summary](#)
- [HHS emPOWER Map Job Aid](#)
- [HHS emPOWER REST Service Public](#)
- [HHS emPOWER REST Service Job Aid](#)

Effective February 11, ASPR completed a REST Service update. You must go to the REST Service link above to connect to the newly named service and endpoints.



Select data type

[Reset Map](#)

- [Single Location](#)
- [Multiple Locations](#)

Select map attributes to display data

Natural Hazards

Map Style (Optional)

Region for Health Data

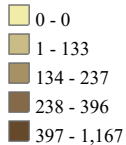
State

County

ZIP Code

Medicare Data Totals

Geographical Area: Wakulla
 Beneficiaries: 5,552
 Electricity-Dependent Beneficiaries: 329

Electricity-Dependent Scale**Natural Hazard Legend****Electricity-Dependent Medicare Population by Selected Region**

- [States/Territories](#)
- [Counties](#)
- [ZIP Codes](#)

Geographic Area Beneficiaries Electricity-Dependent Beneficiaries

32327	4,369	259
32346	580	29
32355	97	11
32358	506	30

Note (1): The map uses de-identified claims data, updated monthly, on Medicare Fee-for-Service and Medicare Advantage (Parts A, B and C) beneficiaries, which includes Americans age 65 and over, and disabled Americans under age 65. The totals listed here may underestimate the total at-risk Medicare beneficiary population due to certain Medicare policies and processes.

Note (2): The "electricity-dependent" number, by location, represents the total number of beneficiaries with claims in Centers for Medicare and Medicaid Services (CMS) databases from the prior month for: ventilator, BiPAP, enteral feeding machine, intravenous (IV) infusion pump, suction pump, at-home dialysis machine, electric wheelchair, electric scooter, and electric bed equipment in the past 13 months; oxygen concentrator equipment in the past 36 months; and implanted cardiac devices that include left ventricular assistive device (LVAD), right ventricular assistive device (RVAD), bi-ventricular assistive device (BIVAD), and total artificial heart (TAH) in the past 5 years. To protect individual privacy, the following de-identification methodologies have been implemented: removal of all personal identifiers; aggregating data totals at the geographic level; and replacing any small cell size between 1 and 10 (e.g., a ZIP Code with only 3 individuals) with an 11. Some ZIP Codes may not be represented on the map because they do not have geographical boundaries (e.g. post office boxes, a large building, etc.). In these instances, we add their total to the geographical ZIP Code where the post office box or building can be found.

Note (3): The map is provided to inform and support community partner emergency preparedness, mitigation, response, recovery, and resilience activities. Use of this tool and data signifies your agreement to: use it for the specified purposes; make no attempt to identify any individual in this data; and send an email to empower@hhs.gov if a small size between 1 and 10 is identified at any geographic level. Send any additional questions to empower@hhs.gov.

Note (4): The public emPOWER REST Service that contains emPOWER Program geospatial data can be found at: https://geohealth.hhs.gov/dataaccess/rest/services/CMS_DME/HHS_CMS_DME_ESRD_onlyAll/MapServer.

Note (5): Information regarding the Natural Hazards can be found from the source webpages:

- National Oceanic and Atmospheric Administration (NOAA) National Weather Service active weather alerts can be found at: <http://www.weather.gov>.
- Hurricanes, Radar, Flood, Precipitation, and Storm Prediction: <https://idpgis.ncep.noaa.gov/arcgis/rest/services>.
- Long Duration and Short Duration Hazards: <https://new.nowcoast.noaa.gov/arcgis/rest/services>.
- Wildfire: https://geohealth.hhs.gov/arcgis/sharing/servers/404b2fe9c9ea407cae8d56d5cf62e18a/rest/services/LiveFeeds/Wildfire_Activity/MapServer.
- Seismic Activity: https://geohealth.hhs.gov/arcgis/sharing/servers/11e49b2f31b04811a339cf0865806711/rest/services/LiveFeeds/USGS_Seismic_Data/MapServer.

- [HOME](#)
- [PHE.GOV](#)



[Office of the Assistant Secretary for Preparedness & Response](#)

[Privacy, Accessibility, Disclaimer](#)

[U.S. Department of Health & Human Services](#)

200 Independence Avenue, S.W. Washington, D.C. 20201

Data last updated: 5 April 2019

Webpage last updated: 30 December 2016

Webpage first published: 23 June 2015